



## Light Measurement Report

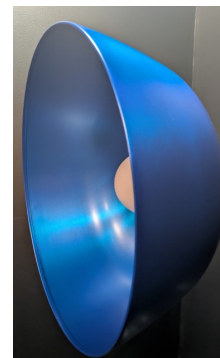
Print date: 10/3/2025

Measurement date and time: 9/29/2025 10:58:36 AM – Measurement no. VFR-250929-0161-MS

Operator: Shawn Blaszak

### Tested Light Source

Product Name	Dram: DR-M-PC52_PC52-MTP-27-0.1_10V_UNV
Manufacturer	RBW
Product Description	Dram-Medium-Blue "Anodized" _Blue "Anodized"-Matte PET-2700K-0.1% Dimming, 0-10V Control, 120V-277V "Universal Input" (Driver External), Input Current: 350mA, Driver Model: EldoLED



### Light Quality

CRI: 95.2

### Color Temperature

3016 K

### Color Match

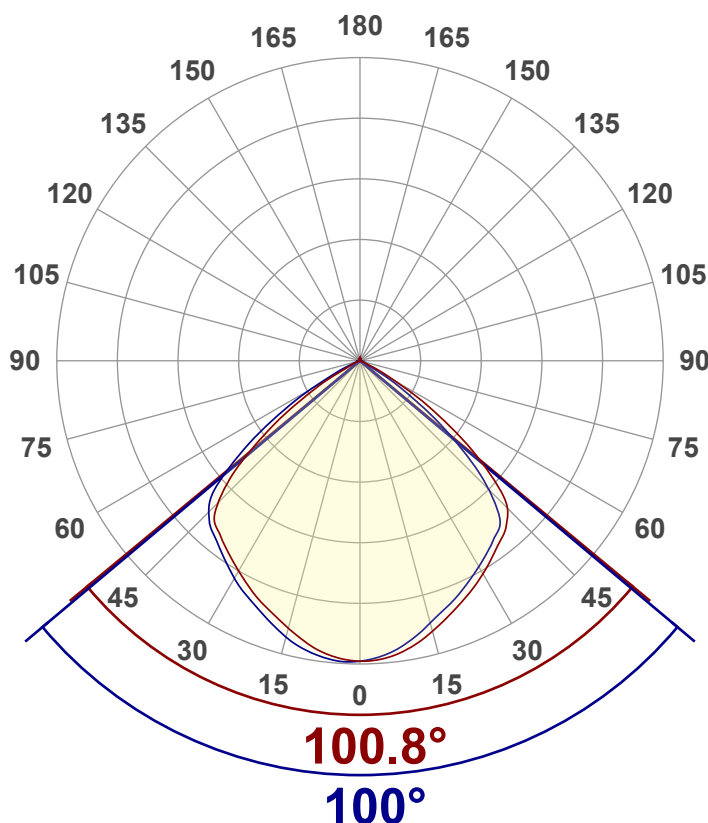
CIE1931  
x: {CIEx#}  
y: {CIEy#}

### Summary of Results

Total Lumen Output	527 lm
Luminaire Efficacy	36 lm/W
Peak Intensity and Beam Angle	253 cd - 100.4°
Color Rendering TM13-18	R <sub>r</sub> 93.1 – R <sub>g</sub> 99.5
Color Shift, CIE duv	Duv -0.0022
MacAdams Steps	3
Flicker	SVM 0.05 – PstLM 0.2
Input Power, Power and Displ. Factors	14.8 W – PF 0.95 – DPF 0.98
Input RMS Voltage and Current	120 V – 0.130 A
Frequency of Input Power	60 Hz

### Luminous Intensity diagram

Unit: 0-100% of peak intensity



### Main Values

Output (total Lumen)	527 lm
Lumen Up% / Down%	1.02% / 98.98%
Peak Intensity	253 cd
Beam Angle (50%-FWHM)	100.45°

### Cut-off Angle

Average 2,5%	131.7°
--------------	--------

### Field Angle

Average 10%	122.3°
-------------	--------

### Intensity Ratio

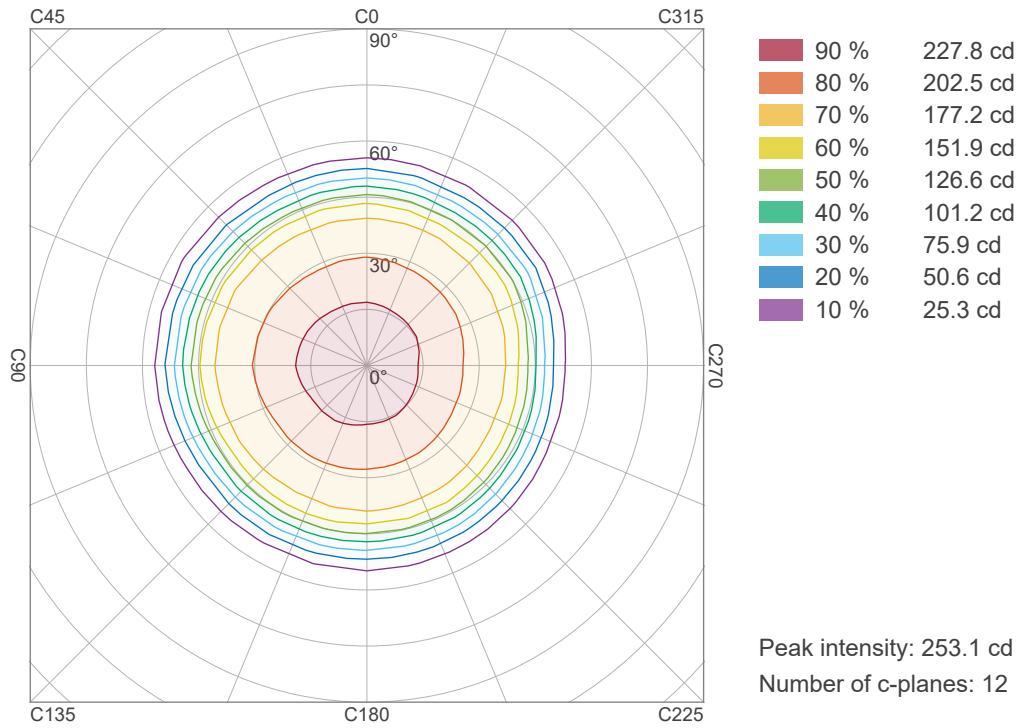
In 120° cone	96.5%
In 90° cone	71.7%

C000-C180

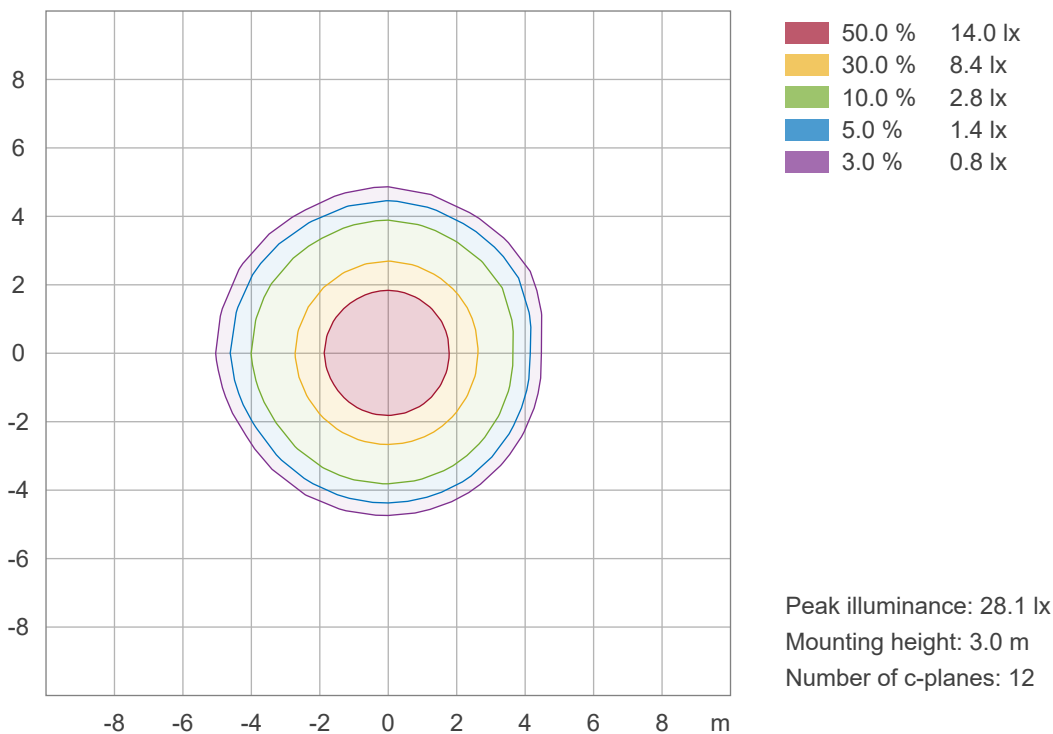
C090-C270



### Iso-intensity Diagram (Iso-candela)



### Iso-illuminance Diagram (Iso-lux)





## Light Measurement Report

Print date: 10/3/2025

Measurement date and time: 9/29/2025 10:58:36 AM – Measurement no. VFR-250929-0161-MS

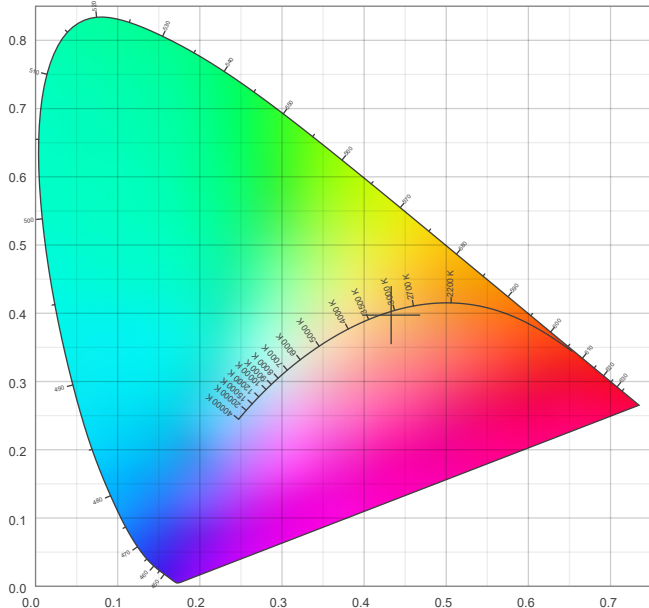
Operator: Shawn Blaszk

### Color details

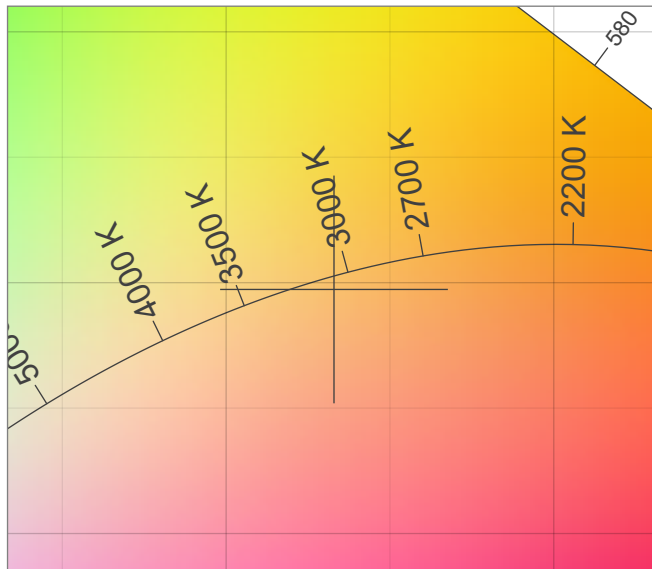
Correlated Color Temperature, Target CCT = 3016 K  
Correlated Color Temperature, Measured CCT = 3016 K  
Color Rendering Index CRI 95.2  
Color Rendering Index, R9 (red component) R9 = 74.8  
Color Rendering TM30-18 R<sub>r</sub> 93.1 – R<sub>g</sub> 99.5  
Color Quality Scale CQS = 94.4

MacAdam Steps 3  
Color coordinates CIE 1931 (x;y) = (0.433;0.397)  
Color coordinate CIEs 1960 (u;v) = (0.251;0.345)  
Color deviation from BBL Duv = -0.0022  
Color coordinate CIEs 1976 (CIELUV)(u';v') = (0.251;0.518)

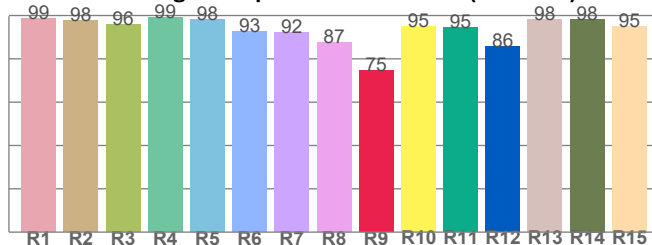
#### CIE 1931



#### CIE 1931 – zoomed on Planckian locus



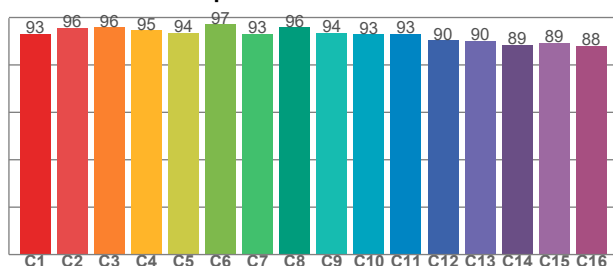
#### Color Rendering Index per reference color (CIE 1995)



CRI R values, only R1-R8 are used to calculate final CRI value

R1	R2	R3	R4	R5	R6	R7	R8	R9	R10	R11	R12	R13	R14	R15
98.7	97.6	95.9	99.2	98.1	92.6	92.1	87.5	74.8	94.8	94.6	85.7	98.3	98.4	95.1

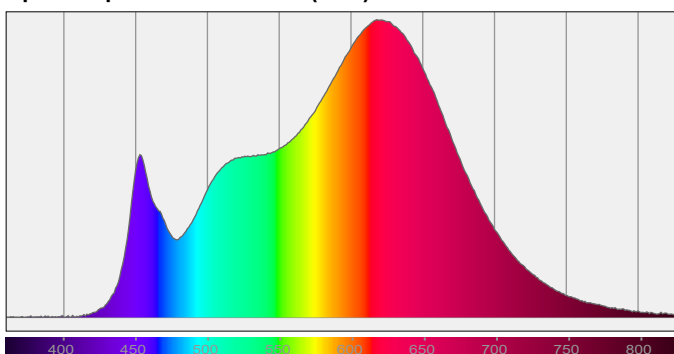
#### TM30-18 Rf-values per hue bin



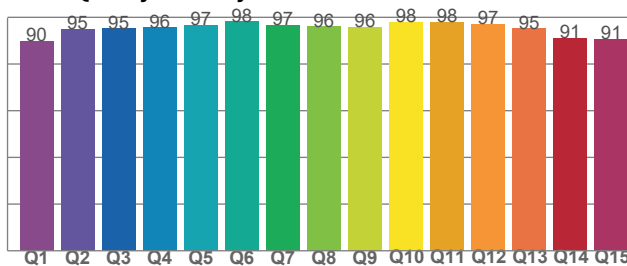
TM30 C values, 16 binned values out of total of 99 C values

C1	C2	C3	C4	C5	C6	C7	C8	C9	C10	C11	C12	C13	C14	C15	C16
93.1	95.7	95.8	94.6	93.6	97.2	93.2	95.9	93.6	92.9	93.0	90.3	90.2	88.5	89.3	88.1

#### Spectral power distribution (SPD) / W/nm – 0-100%



#### Color Quality Scale by reference color



CQS Q values

Q1	Q2	Q3	Q4	Q5	Q6	Q7	Q8	Q9	Q10	Q11	Q12	Q13	Q14	Q15
89.9	95.1	95.1	95.6	96.7	98.1	96.8	96.0	95.9	97.9	97.9	97.0	95.1	91.1	90.7

